

**Artworks' mission is
to use creativity as
a catalyst for change**





Annual Review
April 2009 to March 2010



Artworks
Creative
Communities

Chair's Statement

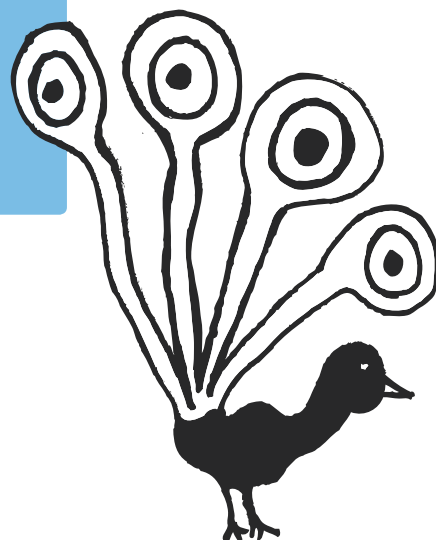
Artworks Creative Communities has undergone significant changes during this year to enable us to respond positively to all the challenges coming our way. We have built more robust structures, grown our capacity, widened the scope of our work and improved our practices to enrich and develop the services we offer to our clients and the wider community.

The whole team is working hard to ensure our values underpin all that we provide, and that our services are of high quality even in these challenging times.

My heartfelt thanks go out to everyone who has worked so tirelessly to ensure our success through their hard work, dedication and commitment.

Patricia Drake

Chair of the Board of Trustees



Chief Executive's Review

Following a year of consolidation, Artworks Creative Communities has had a year of planned change to ensure that we are prepared for future challenges and opportunities.

We undertook a review of staff structures and roles and responsibilities, and took advantage of the opportunity afforded by the need to recruit new staff members – bringing in additional skill sets. As part of the review process we set out a two year strategy to modernise the organisation in specific areas, ensuring that we maintain our position as a premier arts organisation in our sector and region.

This year we secured two very significant and large scale projects, and explored new areas of work and application for our creative techniques. We intend to build on these successes in the years to come.

The economic climate presents challenges for us, the creative and voluntary and community sectors alike. However, we feel confident that we are prepared to meet these challenges and will be seeking to take advantage of the right opportunities to reach out to those most in need of our services and support.

My thanks go out to all the staff and Trustees for their hard work, commitment and support.

Ed Hall

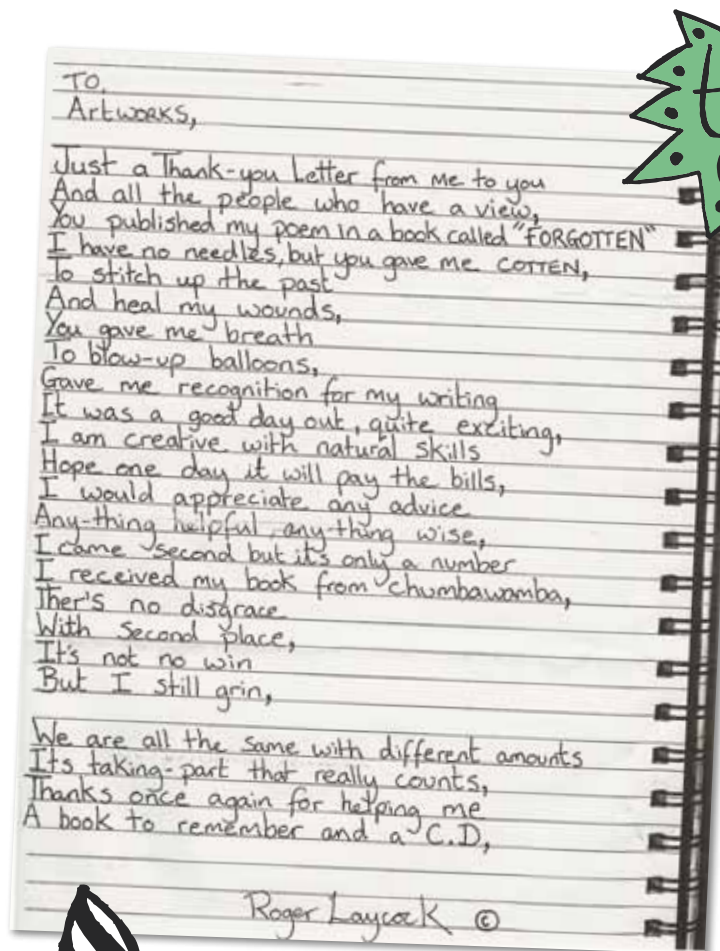
Artworks Creative Communities, CEO

Arts and Health

2009/10 has been a great year for arts and health. We have continued with our two commissioned pieces of work for NHS Bradford and Airedale in partnership with Kala Sangam delivering creative projects to improve health across the Bradford District. Some of the highlights have been the fantastic mosaic work done at the 3 Saints Hostel in Manningham, a great half term arts project with young people in Denholme and the Get Your Pen Out project. This hugely successful partnership with the Bradford Alliance on Community Care resulted in the publication of 'Forgotten' (a compilation of poetry and images) and was Highly Commended in the Arts, Heritage and Culture category of The Charities Awards 2010.



We have received 2 separate pieces of funding from the West Yorkshire Learning Consortium to continue and strengthen our work with homeless people and presented this work at their celebration event in Leeds in May.



We have also delivered training in "Improving Patient experience" for St Luke's Hospital in Bradford, and feedback from our evaluation 6 months on is showing how deeply we embedded the training and the difference it is making in the hospital. We've also worked with our friends and partners at the Care Quality Commission to deliver a third fantastic Ignite for Health training course for the Speakout network.

Commissions

Artworks continues to grow and develop the commission income stream and achieve a healthy income through social enterprise. We have completed some very exciting projects in the year 2009/10 ranging from public artwork and participatory youth projects, to creative facilitation for new high profile customers, team days and events.

We have since extended our reach regionally, with the aim of working nationally before the end of 2012 to deliver exceptional innovative creative commissions.

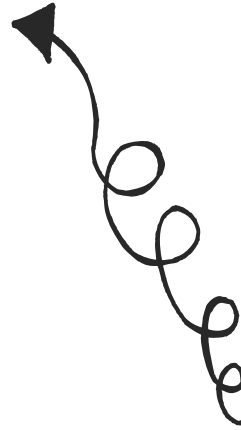
"Patients, staff and our organisation seem in unanimous agreement that the internal pieces of work are fantastic and a complete success. We have had a number of comments that the artwork detracts nicely from the institutional/clinical feel of a health care building. They certainly add to the overall welcoming feel to the building, and are enjoyed by all"

Dr Simon Gazeley, Canalside health care centre



Dewsbury graffiti Project

Artworks artist and Senior projects co-ordinator **Jojo Walker** worked on a graffiti project with Kirklees youth offending team and the talent centre to produce artwork to be displayed on the exterior of Dewsbury Town Hall during its refurbishment.



Bingley Health Centre

Artworks was commissioned by BRADFORD AND AIREDALE CARE PARTNERS and the PCT to commission a number of permanent artworks within the new Bingley Health Centre. Artworks' artists worked with local community groups, patients and health centre staff to develop words, extended texts, poems and images, which were then interpreted into public art by artists Dan Savage and Dominic Pote.

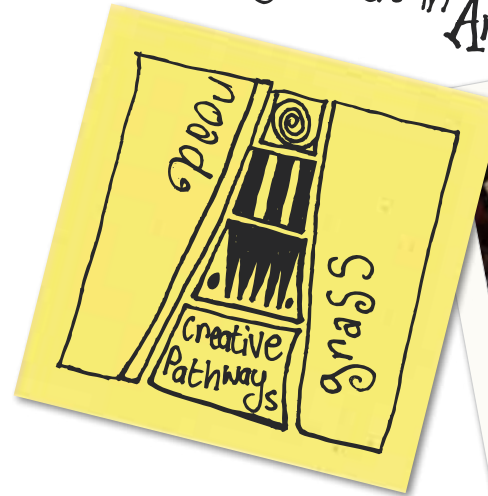
Training

Artworks' training provision has gone from strength to strength this year, with a wide range of programmes reaching diverse learners – from conflict resolution sessions for domestic violence support projects to creative sector work placements for long-term unemployed people, and visual arts techniques for child development workers to the recruitment of a team of community learning champions. We are proving again and again how training rooted in innovation and creativity can make real differences to people's lives.

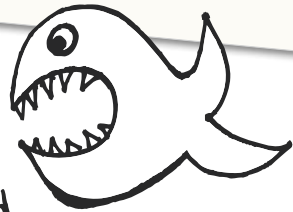
Week long Ignite
In June 2009 17 learners had the opportunity to try out a wide range of different creative processes that can be used in a variety of contexts - e.g. ways of using print and mark making with disabled people or creative writing as a reminiscence tool for older people.



"Bite-Sized ignite sessions are good because they tell you everything you need to know in a short time. I've learnt how to include healthy matters in Artwork"



Bite sized ignite
This year our Bite sized ignite programme really took off, with over 30 sessions to 12 different organisations, including Mind the Gap Theatre, Gingerbread, the YMCA and the Oasis project.



Our work with long-term unemployed people who are seeking creative careers came to a successful conclusion this year. We celebrated the end of the programme with a big event at St Peter's House in November to which all of the participants were invited.

Youth Arts

This year has seen Artworks carry on with some old favourites (like the Youth Music Mentors programme) as well as taking on major new projects like Creative Together, our Big Lottery funded Family Learning project. We've taken on some interesting and exciting commissions, and brought creativity to new groups of young people.



this year has seen us carrying on some of the great work that has been done with hard-to-reach young people through our Youth Music Mentoring programme. The focus this year has been on developing the sustainability of the programme in order to ensure that young people are able to carry on with music making activities in Bradford at the end of the life of the project.

Creative Together

Artworks launched the **big lottery funded** Creative Together programme in June 2009, to great interest from organisations who work with children and young people across the region. For the first time we have funding to extend the reach of our projects to other areas of West Yorkshire, as the project also moves us into Calderdale, Kirklees and Leeds. The programme will run for 4 years.

"We should start a lantern making company and we could make lanterns for charities."

Mixenden parents resource centre participant.





Finance & Monitoring

Income & Expenditure

Total income: £429,960

Total expenditure: £434,509

Deficit: £4,549

Projects Statistics

Total projects: 38

Total participants: 2647

Participant Breakdown

Male: 48%

Female: 52%

White: 73%

BME: 27%

Disabilities: 3%

0-4: 5%

5-16: 29%

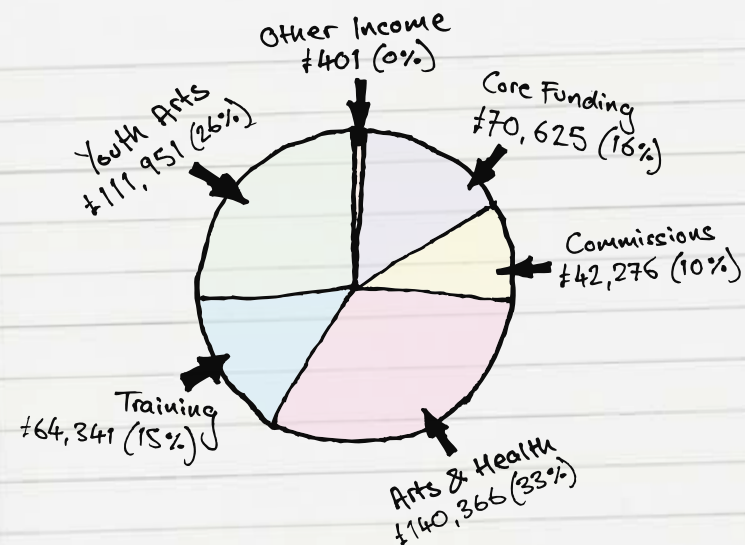
17-19: 2%

Adult: 61%

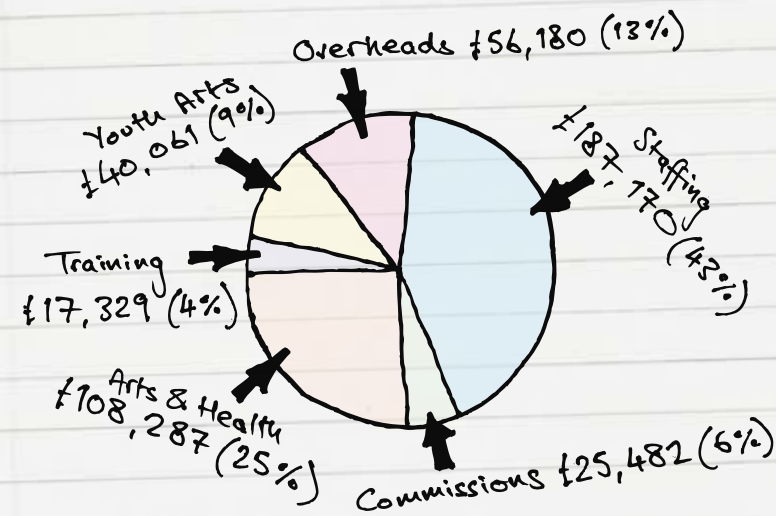
Mixed: 3%

Note: Not all projects are monitored in the same way, therefore these figures do not represent an exact breakdown of participants but are a guide to Artworks' activities.

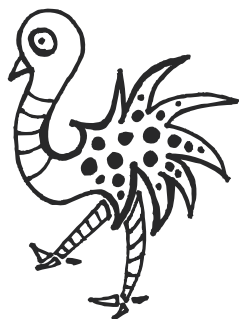
Income sources



Expenditure breakdown



The Artworks Team



Staff

Annie Berrington (left July 2009)

[Attia Marban](#) (joined May 2009)

Cat Thom (joined Nov 2009)

[Ed Hall](#)

Emma Baylin (left Nov 2009)

[Estelle Cooper](#)

Ged Walker

[Jessica Penrose](#)

Lucy Britton (left Sept 2009)

[Steve McCabe](#)

Susan Eardley

[Suzy Russell](#) (joined Sept 2009)

Toby Thomas (joined Dec 2009)

Volunteers

Aga Gawlik

[Cathy Chamberlain](#)

Ellie Jullings

[Jacqueline James](#)

Jordan Smith

[Laura Rivest](#)

Luke Waltham

[Warren Tolley](#)

Board Members

Adrian McDonald

[Last Cawthra Feather](#)

Carol Wood (left Nov 2009)

[Bradford College](#)

Geoff Roberts

[Developing Minds Ltd](#)

Dr Georgios Vournas

[Trescom](#)

Kath Nuttall (joined Feb 2010)

[Lancashire and South Cumbria
Cancer Network](#)

Patricia Drake

[Consultant](#)

Paul McHugh (left Nov 2009)

[Bradford Youth Service](#)

Robert Stubbs

[Consultant](#)

“Artworks extends heartfelt thanks to all our board members, volunteers, funders, partners, artists and participants for their support over the last year. We look forward to working together in the future.”

Artists & Facilitators

Abbey Printers

[Adam Mileusnic](#)

AJ Creedy

[Alan Lane](#)

Amanda Hulse (Soul 2 Feet)

[Amelia Crouch](#)

Amy Hield

[Annie Berrington](#)

BCB

[Becky Cherriman](#)

Ben Goodwin

[Ben Holden](#)

Brad Wendes

[Bulletpoint Design](#)

Claire Rookes

[Crank it Up](#)

Dan Savage

[David Nixon](#)

Dawn Todd

[Derrie O’Sullivan](#)

Dominic Pote

[Duncan Burnett](#)

Electric Angel

[Frances Taylor](#)

Gary Staniforth

[Ged Walker](#)

Helen Bowcock

[Helen Tanner](#)

Irene Lofthouse

[Jane Dale](#)

Jenny Wilson

[Judy Anne Connor](#)

Karen Knox

[Karina Addy](#)

Larna Campbell

[Laura Rivest](#)

Lloyd Thompson

[Louise Atkinson](#)

Lucy Britton

[Lynne O’Malley \(Rhythm Time\)](#)

Melanie St Clair

[Mick Sugden](#)

Morwenna Catt

[Musiquest](#)

Noel Watkins

[Pavan Sembi](#)

PiPeline Productions

[Rachel Kerr](#)

Rebecca Strain

[Reclaim Creative](#)

Reel Street Productions

[Rosie Spencer](#)

Sarah Hope

[Siobhán MacMahon](#)

Tim Rickaby

[Trish Cooke](#)

Urban Circus Arts

[Vanessa Wheatley](#)

Vidula Shukla

[Viv Owen](#)

Acknowledgements

Partners & Supporters

3 Saints Scheme
Action for Business Ltd (ABL)
Anni Raw
Atlas Primary School
Bannerman / Maxprint Ltd
BEST Training
Bingley Harriers Running Club
Bingley Health Centre
Bingley History Society
Bingley Patient User Group
Birkby Infant and Nursery School
Birkby Junior School
Bmedi@
Born in Bradford (BIB)
Bradford Alliance on
Community Care (BACC)
Bradford Association of Visually
Impaired People (BAVIP)
Bradford Central Library
Bradford Centre for the Deaf
**Bradford Community
Environment Project (BCEP)**
Bradford Early Years and
Childcare Service (BEYCS)
Bradford Playhouse
Bradford Safeguarding
Children Board (BSCB)
Business Link

Calderdale LINK
Carlton Bolling College
Communityworks
Connexions
Denholme Youth Café
**Department for Business
Innovation and Skills (BIS)**
Ebor Gardens Primary School
Ellar Carr Pupil Referral Unit (PRU)
Electric Angel
FABRIC
Farcliffe and Lilycroft Family
and Children's Centre
Gingerbread
Green Lane Primary School
Highcroft Youth Centre
Highfield Healthy Lifestyles
Hindu Cultural Society
Holmewood Salvation Army
Homeless Link
Hope Project
Horton Housing
Integrated Youth Services
Iqra Community and Primary School
Kala Sangam
Keighley Arts Factory (KAF)
Kirkgate Community Centre
Kirklees Youth Offending Team (YOT)

Lawrence Schofield
Lilycroft Nursery School
Manningham Library
Manningham Playspace
Margaret McMillan Primary School
Media and Arts Partnership
Midland Road Nursery School
and Children's Centre
Millan Centre
Mind the Gap
**Miriam Lord Community
Primary School**
Mixenden Parents Resource Centre
MNB Partnership
Oasis Project
Open College Network
Otley Courthouse Arts
and Resource Centre
Placement Support Services
Priestthorpe Primary School
Prom Prom Productions
Rastrick High School
Ryecroft Primary School
Sarah Dunwell (Create Leeds)
St Christopher's Church, Holmewood
St Cuthbert's and the First
Martyrs Primary School
Step2



Supporting People
**Sure Start Children's Centres
North and East Halifax**
Taleem Centre Youth Group
TFD Youth Centre
The Assisi House Project
**The Bradford and Airedale
Community Health Services
Sexual Health Team**
The Equity Partnership
The New Cross Hostel
The Ovenden and
Mixenden Initiative
The Polish Community Centre
The Salvation Army
The Smile Project
Sure Start Children's Centres
North and East Halifax
The Together Women Programme
Thornton Grammar School
Trescom
Trevor Detheridge
Volunteering Bradford
Woodbank School
Yorkshire MESMAC
Youth Music

Acknowledgements

Funders

Arts Council England (ACE)

Barnardo's Seen and Heard Project

Big Lottery Fund: Family Learning Grant

Bradford and Airedale Healthcare Partnerships

Bradford and Airedale tPCT

Bradford Teaching Hospitals (NHS St Luke's Hospital)

Bradford Youth Development Project (BYDP)

CapeUK: Creative Agents

Care Quality Commission (CQC)

CBMDC: Community Funding Unit

CBMDC: Department of Culture, Tourism and Sport

CBMDC: Parks and Landscapes Department

CBMDC: Learning Services

Central YMCA

Craven College (ESF)

Creative Partnerships

Education Bradford

Grants For The Arts (G4A)

Kirklees Metropolitan and District Council

Learning and Skills Council (LSC)

Manningham Healthy Living Initiative (MHLI)

NIACE: Learning Revolution

NHS Bradford and Airedale

Thackley Urban Village

The Learning Revolution

The University of Bradford

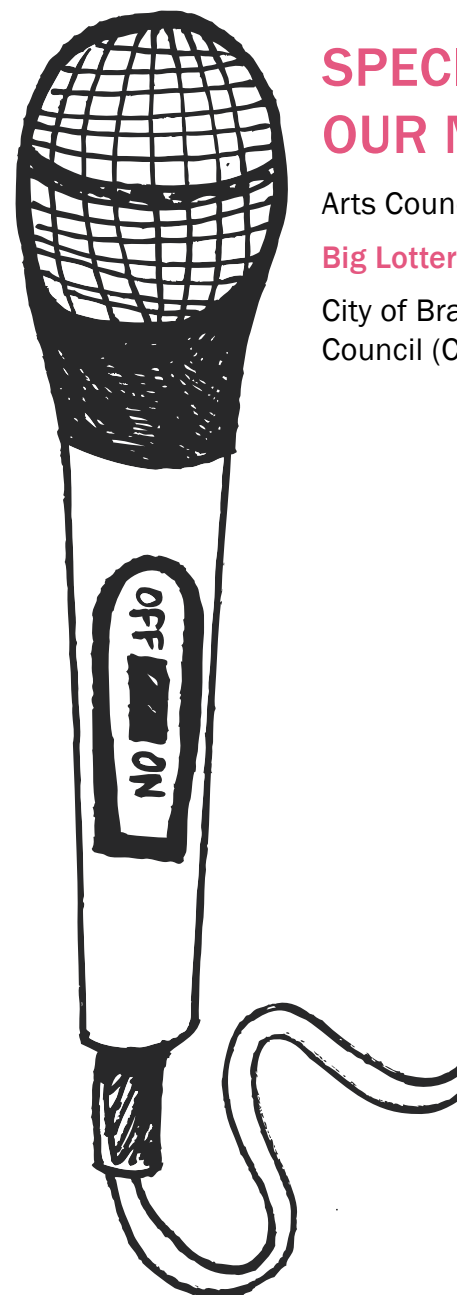
West Yorkshire Learning Consortium (WYLC)

Working Neighbourhoods Fund (WNF)

Yorkshire Forward

Youth Music

Youth Opportunities Fund (YOF)



SPECIAL THANKS TO OUR MAJOR FUNDERS:

Arts Council England (ACE)

Big Lottery Fund: Family Learning Grant

City of Bradford Metropolitan and District Council (CBMDC): Culture, Tourism and Sport

Artworks Creative Communities



Address:

7th Floor City House, 21-27 Cheapside, Bradford, West Yorkshire, BD1 4HR

Tel:

01274 256 919

Fax:

01274 256 920

Email:

info@artworksbradford.org.uk

Website:

www.artworksbradford.org.uk

Copyright © Artworks Creative Communities

Designed by Toby Thomas

Illustrations by Cat Thom

Initial design concept developed by Electric Angel



Supported by
**ARTS COUNCIL
ENGLAND**

City of Bradford MDC
www.bradford.gov.uk



Artworks Creative Communities is a Company Limited by Guarantee Registered in England and Wales No. 4137321 Registered Charity No. 1095583

www.artworksbradford.org.uk